



LOUISIANA Nursery & Landscape

NEWS

JULY/AUGUST/SEPTEMBER 2002

Louisiana Nursery and Landscape News is a quarterly newsletter produced by the Louisiana Nursery and Landscape Association as a member service. The opinions and statements expressed herein do not necessarily represent the views of LNLA, its staff, Board of Directors, or its editors. Likewise, advertisements do not constitute an endorsement of the featured products or services. •

Newsletter Highlights

LNLA Officers, Board and Committees	
LNLA New Members	pg 2
Blumberg	pg 3
George Johnson Nursery	pg 4
In The News	
Bracy's	pg 5
Nursery Growers Trade Show	pg 6
LSU AgCenter Research Projects	pg 7
Dodson Group	pg 8
Mayberry	pg 9
ANLA & Expo Exhibitors	pg 10
2002 Membership Application	pg 11
Florida Pine Straw	pg 12

EVENTS

- Sept**
12-13 LNLA's Certified Nursery and Landscape Professional Review and Exam
 Botanical Garden Study Center, New Orleans
- Sept 17 Baton Rouge Landscape Association Fall Meeting,**
 Capital City Grill, Baton Rouge, LA
- Oct**
19-20 Forest Hill Nursery Growers Trade Show
 Alexandria Riverfront Convention Center
 Alexandria, LA
- Oct 24 Ornamental Horticulture Field Day**
 South Mississippi Branch Research Station
 Poplarville, MS
- Nov 6 8th Annual Louisiana Plant Materials Conference**
 Burden Research Conference Center, Baton Rouge, LA
- Dec 3 Baton Rouge Landscape Association Winter Meeting,**
 Ralph and Kacoo's, Baton Rouge, LA

Margie Jenkins Receives LNPS Award

LNPS News Vol. 20, Issue 1

Mrs. Margie Jenkins of Amite was presented the Karlene DeFatta Award at the annual winter meeting of the Louisiana Native Plant Society (LNPS), January 19, 2002 in Pollock. This award recognizes outstanding accomplishment in the areas of conservation, preservation, and education of the public and in appreciation and uses of natives. It is given only when merit.

Mrs. Margie is recognized as a leader in the field of propagation and promotion of native plants in the nursery industry. She has been a consistent supplier of quality native plant specimens to the nursery industry. She has a special interest in native azaleas. Her talks on natives and their care and propagation are always well received and attended.

Any LNPS member can nominate a person from the state of Louisiana who fits the qualification. Final selection shall be made by a committee consisting of the state president, chapter presidents, newsletter editor, and the board of directors. Previous recipients include Karlene DeFatta, Richard & Jessie Johnson, late Robert Murry, and Jack & Ella Price.

COACHING... The spring playoffs are finally over. The Los Angeles Lakers are the NBA champions (Yawn...) and the Detroit Red Wings are the Stanley Cup champions. (Expected, but not quite a yawn).

I've always been a big sports fan, but in the past few years, professional basketball has not held my interest. Hockey is quite the opposite – there is nothing like the Stanley Cup playoffs.

Phil Jackson is about to break all records when it comes to winning championships as an NBA coach. Scotty Bowman broke the record for winning the most Stanley Cup championships as a coach, then retired. Both men had amazing players, but it took their magic to bring their teams to the championship level.

What can you learn from each coach? How can you get your team to perform at championship levels – year after year after year?

...read about how to "Build Your Dream Workforce" on page 9

2002 LNLA Officers, Board & Committees

OFFICERS

PRESIDENT

David Lowery, Bracy's Nursery, 985.748.4716

PAST PRESIDENT

Randy Bracy, Bracy's Nursery, 985.748.4716

VICE-PRESIDENT

Pat Newman, Folsom Nursery, 985.796.3488

TREASURER

Cody Arceneaux, Live Oak Nursery, 337.367.3485

EXECUTIVE SECRETARY

Allen Owings, LSU AgCenter, 225.578.2222

BOARD of DIRECTORS

DIRECTORS

Dan Devenport, Dan's Nursery, 318.898.9295

Nathan Dondis, Greengate Garden Center, 337.477.6080

Tom Fennell, Clegg's Nursery, 225.275.7006

Danny LaFleur, LaFleur's Nursery, 337.826.7118

Murphy Johnson, George Johnson Nursery, 318.748.6715

Beth Perkins, Banting's Nursery, 504.436.4343

Lancy Strange, Mid-state Nursery, 318.484.2071

MarkWomack, Ganiers Southdown Gardens, 985.879.2115

ASSOCIATE DIRECTOR

Andy Zimlich, Nursery Supplies, 251.476.6867

DIRECTOR/ RESEARCH & EDUCATION

Dan Gill, LSU AgCenter, 225.578.2222

ADMINISTRATIVE ASSISTANTS

Laura Crnko, 225.667.4744

Robert Trawick, LSU AgCenter, 225.578.2222

COMMITTEES

ANLA GOVERNOR & ANLA LT. GOVERNOR

Margie Jenkins, Wanda Chase

EDUCATION COMMITTEE

Ed Bush, Dan Gill, Allen Owings, Rob Trawick

EXECUTIVE COMMITTEE

Cody Arceneaux, Randy Bracy, Pat Newman, David Lowery, Allen Owings

FINANCE COMMITTEE

Cody Arceneaux, Pat Newman, Nathan Dondis

GSHE REPRESENTATIVES

David Lowery, Pat Newman

LDAF PROMOTION

Dan Gill, Tom Fennell, Beth Perkins, Rob Trawick, Rick Webb

LDAF RESEARCH

Randy Bracy, Murphy Johnson, David Lowery, Pat Newman

LOUISIANA FARM BUREAU NURSERYMEN'S COMMITTEE

Dan Devenport, Robby Barry

MAGAZINE

David Lowery, Beth Perkins, Rob Trawick

MEMBERSHIP COMMITTEE

Laura Crnko, Nathan Dondis, Mark Womack

RESEARCH PRIORITY COMMITTEE

Dan Devenport, Danny LaFleur, Pat Newman

SCHOLARSHIP

Dan Gill, Lancy Strange, Allen Owings

SOCIALS

Cody Arceneaux, Dan Devenport, Allen Owings

WEBSITE MANAGER

Gary Marmillion

LOUISIANA NURSERY & LANDSCAPE ASSOCIATION

New Members

(May - August 2002)

AMERICAN CIVIL CONSTRUCTORS - Kerry Rotolo

BOULDIN & LAWSON, LLC - Chris Rowe

CAROL ANN'S NURSERY - Jerry Willis

CUSTOM WATERS LANDSCAPING - Terry Daniel

DANOS & ASSOCIATES - Tony Danos

DEEP SOUTH LANDSCAPING, LLC - Harry Benoit

G & C NURSERY - Greg Martin

GULF COAST TREE BOXES, LLC - John Gerald Thibodeaux

LSU AGCENTER - Sandra Benjamin

LOUISIANA FOREST SEED CO - Gary Delaney

LSU AGCENTER - Henry Harrison

LSU AGCENTER - Monica Lear

LSU AGCENTER - Rene Schmit

MARY BEGUE LANDSCAPING - Mary Begue

NATURESCAPES - Bobby Hatfield

PELICAN STATE GROWERS - Russell Bearden

POOLE BROTHERS NURSERY - Debbie Head

ULL - Billy Welch

ULL - Dennis Wollard

WILLIAMS NURSERY, INC - Martha Vallery

YOU'N ME LANDSCAPING, LLC - Emily Stich

ZELENKA NURSERY - Richard Luchtefeld


ZELENKA NURSERY - Twayab Nurmohamed

ZELENKA NURSERY - Donna Rush-Hellmens



Louisiana
Nursery &
Landscape
ASSOCIATION

Come Grow With Us



The Louisiana Nursery and Landscape Association has endorsed Blumberg and Associates, Inc. as it's insurance agency of choice.

Blumberg and Associates provides insurance coverage with personal service for a variety of needs, both commercial and private. You can choose from many "A" rated insurance carriers with competitive rates and payment plans.

- General Liability
- Automobile - including trailers
- Property - buildings & Contents
- Equipment
- Umbrella
- Health - great new programs available for small operators

Call For A FREE Quote

Baton Rouge
11019 Perkins Road, 70810
P.O. Box 82030, 70884
225-767-1442
225-767-0806 (Fax)



Ponchatoula
1440 Hwy. 51 North
P.O. Box 750, 70754
985-386-3874
985-386-5541 (FAX)



Denham Springs
805 N. Range Ave.
P.O. Box 1205, 70727
225-665-8146
225-665-3723 (Fax)

Blumberg and Associates, Inc.





"QUALITY
PLANTS"



GEORGE JOHNSON

NURSERY inc.

MEMBER

A.N.L.A. • L.N.L.A. • T.A.N. • A.N.A.

O.N.A. • S.N.A. • N.C.A.N



Container &
Field Grown
Material

3848 Highway 112
Forest Hill, LA 71430
Phone: 1-318-748-6715
Fax 1-318-748-6893
Toll Free 1-888-755-5653
<http://www.growit.com/geojohnnsy>

George M. Johnson, Jr.
Owner

Murphy Johnson
President

Mark Lachney
Manager

Phylliss Lachney
Linda Prosha
Assistant Managers

IN THE NEWS

In the News

Congratulations to Louisiana winners in the 2001 ALCA/CNA Safety Contest. A 3rd place fleet safety award was presented to Landscape Images, Inc. of Jefferson, LA. They also received a No Vehicle Accidents award. No Lost Time Accident awards were presented to Anthony's Landscaping in Harahan, Choice Lawn and Landscaping in Maurice and Landscape Images. Congratulations to all of these Louisiana winners!

David Lowery, formerly regional sales manager for Zelenka Nursery in Folsom, has recently joined Bracy's Nursery in Amite as sales manager. Lowery currently is serving as LNLA president.

The LSU Department of Horticulture hosted its second **Nursery/Landscape Golf Shootout** at the LSU Golf Course in Baton Rouge on May 31st. Eight teams participated in the event. First place prize were \$50 pro shop gift certificates. Very special thanks to Jon Ducote of BWI Companies and the Louisiana Nursery and Landscape Association for serving as the corporate sponsors for this year's event. Also, thanks are extended to the LSU College of Agriculture and the

Louisiana Department of Agriculture and Forestry for their support. Additional sponsors were George Johnson Nursery, Baton Rouge Landscape Association, C.J.'s Nursery, Southeast Louisiana Nurserymen's Association, Louisiana State Horticulture Society and the Metro Area Horticulture Foundation. Thanks to artist Henry Lastrapes of Baton Rouge for his donation of a water coloring for a closest to the hole prize. Contact Allen Owings at 225-578-2222 for information on plans for the 2003 golf shootout.


Dan Gill and **Allen Owings**, faculty members in the LSU Department of Horticulture, were recently named award winners from the Louisiana County Agricultural Agents Association and National County Agricultural Agents Association. Gill was selected for the Distinguished Service Award. He is a 21-year employee of the LSU AgCenter and served as horticulture agent in the New Orleans metropolitan area until recently when he transferred to Baton Rouge to lead statewide efforts in consumer horticulture. Owings has been employed by the LSU AgCenter since 1992 and was named recipient of the Achievement Award. He provides statewide coordination of LSU AgCenter efforts in commercial ornamentals. Gill serves as education director for LNLA while Owings is LNLA's executive secretary.

In Memoriam

Joan Majors Dubreuil, longtime office manager at Windmill Nurseries (now Zelenka Nursery) passed away unexpectedly Tuesday June 18th. The family requests that donations be made to Friendship Baptist Church, 62502 Friendship Church Road, Amite, LA. LNLA expresses sympathy to her family.

Louisiana Exhibitors SNA 2002

Coates Manufacturing - Bossier City
George Johnson Nursery - Forest Hill
Eagle River Nursery - Boyce
Lakeview Nursery - Alexandria
Louisiana Tree Farm - Bunkie
Miller's Ground Covers - Forest Hill
Poole Brothers Nursery - Forest Hill
Quality Plants, Inc. - Forest Hill
Robbins Tree Ranch - Forest Hill
Robert Strange Nursery - Forest Hill
Sugarkettles.com - Opelousas
SUSTA - New Orleans
Taylor Nursery - Forest Hill
Doug Young Nursery - Forest Hill



Where it all comes together

**BRACY'S
NURSERY**

Quality - Service - Selection - Price

*Specializing in container-grown
fruit and berry plants,
flowering and shade trees,
and ornamental shrubs for the South*

64624 Dummyline Road (985) 748-4716
Amite, Louisiana 70422 Fax (985) 748-9955

E-Mail bracys@i-55.com



Join Forest Hill Growers

at the

1st Annual

Nursery Growers Trade Show

•Nursery Capital of Louisiana•



Oct. 19-20, 2002

Alexandria Riverfront Convention Center

For more information contact:

Becky Lowe

Trade Show Coordinator

318-748-6239

318-452-4637

Forest Hill Town Hall

318-748-6300

Email: foresthla@centurytel.net

Fax: 318-748-8850

LSU AgCenter

Current Research Projects in Nursery, Landscape, and Floriculture

On-Going

- Poinsettia cultivar evaluations
- Annual bedding plant landscape performance (horticulture and pathology information)
- Landscape performance of modern rose varieties (pathology information)
- Large container production of trees and shrubs (fertilization and irrigation)
- Post production landscape performance of large container grown tree species
- Pot in pot (in ground and above ground) production of tree species
- Herbicide phytotoxicity in azalea liner and 1-gallon container production
- Control of ball moss in commercial landscape settings
- Development of potential cut flower crops for Louisiana
- Crape myrtle cultivar evaluations (horticulture and pathology information)
- Development of calla lily as a floricultural pot plant
- Development of ginger as a floricultural pot plant
- Landscape performance of ginger genera, species, and cultivars
- Heat stress physiology in production of herbaceous perennials
- Virus indexing of ornamental sweet potatoes
- Growth regulators for annual bedding plants
- Landscape performance of ornamental grass cultivars
- Green industry economic significance survey
- Plant growth regulators for sucker growth retardation on woody landscape plants
- Landscape performance of shrubs determined by planting and mulching techniques
- Liriope and ophiopogon landscape performance (horticulture and pathology information)
- Mulching studies for southern live oaks
- Propagation protocols for liriope and ophiopogon
- Liriope and ophiopogon DNA fingerprinting
- Nursery container production systems
- Re-juvenation of culled nursery stock
- Performance of wetland grasses for landscape use
- Evaluation of USDA live oak seedlings for nursery production

Planned for Later 2002 and 2003

- Landscape performance of miniature and ground cover rose varieties
- Landscape performance of new shade tree cultivars
- Controlled release fertilizer evaluation in 1-gallon and 3-gallon containers
- Mulching and planting techniques for lorapetalum
- Alternative cool season bedding plant landscape evaluations
- Re-initiation of fall fertilization studies in container production
- Performance of 360-540 day controlled-release fertilizers
- Evaluation of micro-irrigation systems for nursery production
- Fire ant management in nursery settings
- Selective weed control in groundcover planting
- Pulse irrigation effects in overhead ornamental production



DODSON GROUP®

Risk Management Since 1900

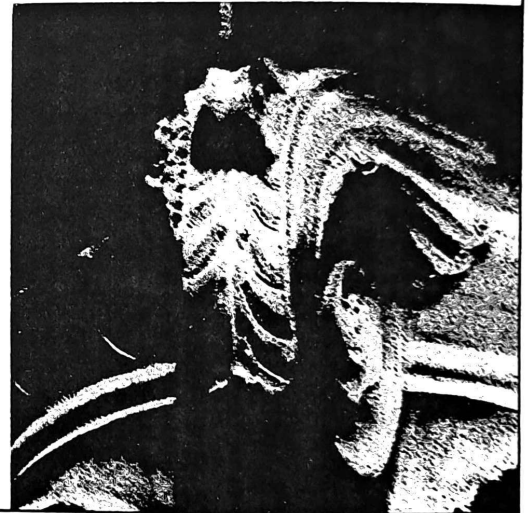
Louisiana Association of Nurserymen
is proud to announce its endorsement
of **Dodson Group®** as its source for
workers' compensation insurance.

WORKERS' COMPENSATION INSURANCE

WORK HARD. WORK SAFE. BUY SMART.
Choosing the right workers'
compensation provider for your
business shouldn't be left
to chance.

EXPERIENCE COUNTS, AND
WE'VE GOT IT.

- WORKERS' COMPENSATION
SINCE 1912
- FREE LOSS CONTROL SERVICES
- SUPERIOR CLAIMS HANDLING



More
than

\$ 5 MILLION

IN DIVIDENDS PAID TO PROGRAM PARTICIPANTS IN 1999!



DODSON GROUP®

Risk Management Since 1900

For more information,
contact:

Call: 800.825.9489

Fax: 800.825.6035

www.dodsongroup.com

State laws prohibit insurance companies
from guaranteeing future dividends.

Policies issued by CRE™ and EMIC™.

© Dodson Group 2000

Building The Dream Workforce

BY MARK MAYBERRY

Since becoming a full-time professional speaker in 1990, there is one question I am asked over and over again. That question is, "How do I motivate my team?" Or, "How can I get my team members to take ownership?"

Taking ownership is more than just words on paper – or on a badge. I walked into a convenience store in Illinois, on my way to a speaking engagement. As I walked up to the counter, I noticed that the sales clerk had on a badge that said, "I'm an owner!"

"Shazam!" (Since my last name is Mayberry, "Shazam" fits!) Here was a company that understands my concept of team members taking ownership! I walked up to the counter, looked at the clerk and excitably asked, "What does that badge mean?"

The clerk looked at me, looked down at the badge, looked back up at me and said, "I don't know. They just told me I had to wear it!" Not exactly the response I was looking for!

To build a dream workforce, you must get your team to think and act like entrepreneurs – WITHIN your organization! They must take ownership!

Thus, a few years ago, John Scriven and I wrote, "In The Company Of Entrepreneurs." I am proud to announce that John and I have updated this book, added a new cover, and changed the title to "Building The Dream Workforce: How To Make Good People Great And Great People Even Better."

Here's our definition of an entrepreneur – within an organization. Entrepreneurs are enterprising, Customer-focused risk takers, who don't know how to think small, hold themselves accountable for everything they do, make work fun for themselves and everyone else, and go on learning until the day they die!

Let's analyze that definition, one part at a time:

Enterprising – **Every one of your team members must realize that their job is part of the big picture**, and that picture is funded by a profitable organization.

Customer-focused – **Treat your Internal and External Customers with respect, appreciation and responsiveness – with plenty of Shazam!**

Risk takers – **To improve, you must get your team to change.** Not for the sake of change, but to break out of your comfort zones. Your team probably resists change, but you must get them to try new things, always seeking improvement. If change did not happen, we'd still be pulling a mowing device behind a mule!

Don't know how to think small – **One simple question. Is your team thinking big enough?**

Hold themselves accountable for everything they do – There is a fine line between "blame" and "accountability." I have clients in a wide variety of industries – and I usually find too much blame, and rarely find enough accountability. **Everyone must be held accountable.** There is no room for blame.

Make work fun for himself or herself and everyone else – Are you having fun? Is your team? **As a leader, you must make sure that your team is having fun.** Not to the point that work doesn't get done – but so that everyone is more productive by having a smile on their face.

Go on learning until the day they die – **How can you get your team to be life-long learners – and have fun doing it?**

How can you get your team to care as much as you do? Build YOUR dream workforce by following our definition of an entrepreneur – within any organization – including yours! Your company should be the best place to work in town. By teaching your team how to act like, think like – actually be entrepreneurial thinkers and doers – you will build a dream workforce. Recruiting and retaining team members will become easier, as this entrepreneurial culture grows. And you won't need a badge to prove it!

If you would like a copy of our new book (\$20.00), call my toll-free number (800-394-6138). If you order by October 1st, I'll even pay the shipping, and make sure that I autograph every book.

ANLA



wants to protect your future... details next page

NURSERY/LANDSCAPE EXPO 2002

Louisiana Exhibitors

Adams Nursery - Forest Hill
B and T Greenhouse Manufacturing - Forest Hill
Cheek Garden Products - Shreveport
Country Pines Nursery - Forest Hill
Ducote's Nursery - Lakeland
East of Eden - Forest Hill
George Johnson Nursery - Forest Hill
Gordon Barney and Associates - Baton Rouge
J and M Industries - Hammond
John Langston Nursery - Forest Hill
LaCroix Nursery - Kentwood
Lakeview Nursery - Alexandria
La Dept of Agriculture and Forestry - Baton Rouge
LSU Department of Horticulture - Baton Rouge
Louisiana Soil Products of Ruston - Ruston
Murrell Trading Company - Bayou Goula
Prairie Wholesale Nursery - Washington
Songbird Gardens - Forest Hill
Sugarkettles.com - Opelousas
Teche Nursery - Lafayette
Zelenka Nursery - Folsom

Anamese Garden Products - Welsh
Barry's Nursery - Grand Coteau
Coates Manufacturing - Bossier City
Doug Young Nursery - Forest Hill
Eagle River Nursery - Boyce
Gerald Foret Wholesale Nursery - New Iberia
George Peters Wholesale Pottery - Shreveport
Holloway's Nursery - Forest Hill
Jenkins Farm and Nursery - Amite
John's Wholesale Nursery - Washington
LaFleur's Nursery - Washington
Live Oak Gardens - New Iberia
La Nursery and Landscape Association - Baton Rouge
Louisiana Tree Farm - Bunkie
Miller's Ground Covers - Forest Hill
Poly Drip Irrigation - Baton Rouge
Robbins Tree Ranch - Lecompte
Robert Strange Nursery - Forest Hill
Taylor Nursery - Forest Hill
Thaico Nursery - Forest Hill

It's your future. *Protect your bottom line for just a dime a day.*



Sometimes it seems like decision-making in Washington is just a crap shoot. But the truth is, it's about grassroots organization to achieve common goals. The ANLA Lighthouse Program is a partnership between your state association and the American Nursery & Landscape Association to make certain our future isn't decided willy-nilly up on Capitol Hill.

This year, ANLA expects to earmark more than 200 bills in 45 issue areas that will directly affect your business. Become a grassroots participant for just \$36.50—it's a small price to pay to protect your future. Here's what you'll get:

- a Grassroots Action Kit—\$50 value—FREE for signing up!
- Legislative alerts that keep you abreast of pending legislation—and what the outcome means for you.
- Action reports that summarize our efforts and help you plan for the future.
- Tools you can really use in your grassroots efforts...a list of U.S. Senate and House representatives...sample letters...data you can't get anywhere else on where Congress stands on issues that are critical to the nursery and landscape industry.



ANLA Lighthouse Program

1250 I Street, N.W., Ste. 500 • Washington, DC 20005
Phone: (202) 789-2900 • Fax: (202) 789-1893

Sign up for the Lighthouse Program!

YES! I want to protect my future.

Sign me up as a member of the ANLA Lighthouse Program. I've enclosed an annual payment of \$36.50. Rush me a FREE copy of the *Nursery & Landscape Grassroots Action Kit*.

Name _____

Title _____

Organization _____

Address _____

City/State/Zip _____

Phone _____

Fax _____

E-Mail _____

My check is enclosed, made payable to American Nursery & Landscape Association.

Charge my credit card:

VISA

MasterCard

Card # _____

Expiration _____

Signature _____



Louisiana Nursery and Landscape Association

"Serving Louisiana's Green Industry Since 1954"

Phone 225/ 578-2222, FAX 225/ 578-0773

Membership Application

Please select **X** all categories that apply:

- Independent Retail Garden Center
- Mass Merchandiser
- Wholesale Greenhouse Grower
- Allied Supplies
- Horticultural Services
- Wholesale Woody Grower
- Lawn Maintenance
- Extension/Education/Research
- Student
- Arborist/Urban Forester
- Landscape Design/Architect
- Landscape Contractor
- Sod Grower
- Other _____

Please select **X** your LNLA membership type:

Regular Members - \$ Based on gross sales

Any corporation, partnership, firm, or person engaged in any facet of the green industry or other related business with a definite address and appropriate facilities having further been actively engaged in the nursery business in a reputable, trustworthy and ethical manner for one year in Louisiana.

	Annual Gross Sales	Dues
<input type="checkbox"/>	\$0 - \$100,000	\$50.00
<input type="checkbox"/>	\$100,00 - \$250,000	\$75.00
<input type="checkbox"/>	\$250,000	\$150.00

Associate Members - \$100.00

Associate members shall be reputable persons, firms, or corporations outside the state of Louisiana actively engaged in the growing and selling of nursery stock, and reputable persons, firms, or corporations inside or outside the state of Louisiana engaged in the supplying of accessories incidental to the nursery business.

Affiliate Members - \$25.00

Business Employed By : _____

A person or persons employed in any capacity in any nursery industry or establishment, or allied industry which is a member in good standing of the association.

Student Members - \$ No Charge

Name of university and location: _____

Any student actively enrolled on a full-time basis in a Louisiana university and majoring in horticulture or a closely allied field.

Governmental Agency/Educational - \$ No Charge

Any person actively employed by a governmental agency or educational institution and having a job responsibility in horticulture or a closely allied field.

OPTIONAL: Members wishing to support these funds should add the \$\$\$ to their dues check. LNLA will forward the funds on to ANLA.

ANLA Beacon Fund - \$10.00 An industry fund supporting federal immigration and labor law reform.

ANLA Lighthouse Fund - \$36.50 An industry fund supporting grassroots legislative lobbying efforts.

Please type or print clearly. The information provided will be used to print LNLA's annual 'green industry' directory.

Company Name _____ Representative's Name _____

Mailing Address _____ City _____ State _____ Zip _____

Telephone (____) _____ - _____, x _____ FAX (____) _____ - _____ E-mail _____

Renewal Date: _____ Check # _____ Amount Remitted \$ _____

New Member

Office Use Only:

<input type="checkbox"/> Enter _____
<input type="checkbox"/> C <input type="checkbox"/> S <input type="checkbox"/> D
<input type="checkbox"/> File _____

Return dues application and check to:

Louisiana Nursery and Landscape Association, PO Box 25100, Baton Rouge, LA 70894-5100



Louisiana
Nursery &
Landscape
ASSOCIATION

P O Box 25100
Baton Rouge, LA 70894

**Quality Pine Straw
• String or Wire Tied •**

*Call Us
For:*

- Quality Pine Straw, clean & fresh
- Drop trailers, specified delivery times
- Prompt dependable service
- Full and partial truckload deliveries available

*We guarantee the quality
of our Pine Straw and
personally stand behind
our product.*

Iris Townsend Stubbs and Calvin Stubbs, Owners

Member of: AAA, AFNN, ANA (AL), ANA (AR),
ANLA, FNGA, GGIA, INA (IL), INA (IN), LAN,
LMA, MNA, NCAN, PLSA, SCNA, SNA,
TNLA (TN), TNLA (TX)



References and prices for your area
are available upon request.



Post Office Box 158
Mayo, Florida 32066-0158
Phone (904) 294-3411
Fax (904) 294-1003

E-mail: iris@floridapinestraw.com
fpssco@suwanneevalley.net
Website: floridapinestraw.com